

# COOK'S COVER UP

by Kathy Fernholz

IJ733 ©2005 INDYGO JUNCTION, INC.

## APRON A - EMBROIDERED

RST = Right Sides Together

All seam allowances are 1/2" unless noted otherwise.

Read all instructions before beginning.

### ASSEMBLY:

1. Cut out the following pattern pieces:

**Piece #1** – cut 1 on fold

Open the contrasting fabric out flat and cut the following pieces:

**Piece #2** – cut 1 on bias \*\*See cutting note on pattern piece

**Piece #3** – cut 1 on bias \*\*See cutting note on pattern piece

**Piece #4** – cut 1 on bias

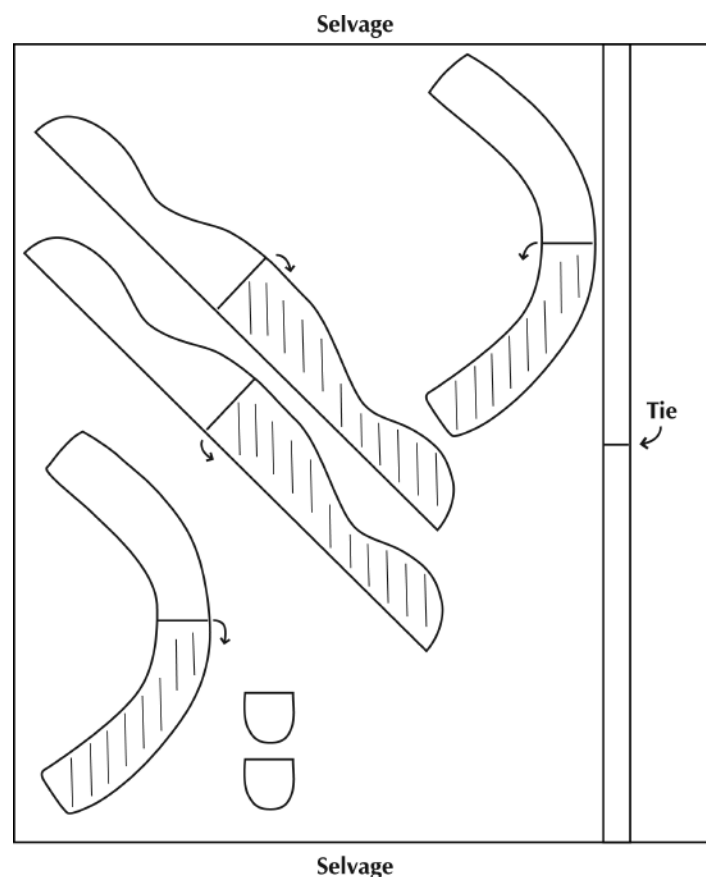
2. Pin neck strap to the top of the apron. Try the apron on. Adjust the length of the strap, if necessary, by trimming BOTH ends of the strap to fit. Apply bias tape to the edges of the neck strap following these directions:

TO APPLY BIAS TAPE:

Open one package of bias tape. Unfold one long edge of the tape and press LIGHTLY to remove fold. Pin unfolded edges of tape to the WRONG side of the neck strap and stitch using a 1/4" seam allowance. Turn bias tape toward the right side of the apron. Press. Topstitch close to the folded edge to secure.

3. Bind both inner and outer edges of the neck strap in this way. Finish short ends of strap. To finish, serge or machine finish. Set aside.
4. Finish bottom edge of apron and top edge of ruffle.
5. With RST, match center of ruffle top edge to center of apron bottom. Pin in place from the center to each side. If ruffle is a little long, trim ends to fit. Stitch ruffle to bottom of apron. Press seam toward apron and topstitch in place.
6. Bind sides and bottom of apron following instructions above for applying bias tape.

## CUTTING DIAGRAM



7. Open second package of bias tape and unfold and prepare as in above instructions.
8. Fold the short end of one end of the tape down 1/4" and press. Measure in 21" from the end of the tape. Begin to apply tape at this mark (as directed above) to the wrong side of the top edge of the apron and continue across the top and down the other side, leaving another 21" for a tie. Prepare the end of the tie as above. Tie ends should be pressed in half. Topstitch in place.
9. Place each end of the neck strap behind the top of the apron, allowing the finished edge to extend about 1/4" below the top of the apron. Topstitch strap to apron top.
10. Apply bias tape to top edge of wrong side of pocket, allowing a 1/4" overhang on each end. Press toward right side of pocket and topstitch in place.
11. Fold remaining edges of pocket piece under 1/4" and press. Place pocket on apron front. Topstitch close to the edge and then again 1/4" away from edge.
12. OPTION: Mark placement of embroidery on lower part of apron as shown in the photo. Use embroidery floss and a combination of French knots, back stitches and chain stitches to complete. (See Page 2, FIGS. 1, 2 and 3).

## APRONS B AND C

RST = Right Sides Together

RSO = Right Side Out

All seam allowances are 1/2" unless noted otherwise.

Read all instructions before beginning.

### ASSEMBLY:

1. Cut out the following pattern pieces:

**Piece #1** – cut 1 on fold and cut one "Apron Facing" on fold

Open the contrasting fabric out flat and cut the following pieces per cutting diagram:

**Piece #2** – cut 2 on bias \*\*See cutting note on pattern piece

**Piece #3** – cut 2 on bias \*\*See cutting note on pattern piece

**Piece #4** – cut 2 on bias

Cut 2 – 22" x 2" strips for waist ties

2. To make the waist ties, fold each short end under 1/4" and press. Fold tie lengthwise in half and press. Open. Fold each lengthwise side to the middle folded line. Press. Fold this in half. Press. Topstitch close to the edge. With RST, position the raw end of the tie where indicated on the apron front. Baste in place.
3. Pin one neck strap to the upper edge of the apron. Try apron on to see if any adjustments are needed. If neck strap is too long, trim both ends of neck strap to fit. Remove neck strap.
4. If you made an adjustment on one neck strap, make the same adjustment to the other neck strap.
5. With RST, stitch neck straps together, leaving short ends open. Turn RSO. Press.
6. Pin neck strap to apron top, with RST, matching symbols. Baste. Set side.
7. Finish the side and lower edge of the apron. To finish, use a serger or a finishing stitch on your sewing machine.
8. Finish the long straight top edge and the side edges of the apron facing. Turn the lower edge under 1" and press. Topstitch in place.
9. With RST pin facing to apron keeping neck strap clear in the middle. Stitch. DO NOT STITCH SIDE SEAM OF APRON/FACING AT THIS TIME.
10. Finish the long straight edge of each ruffle section.

11. With RST stitch two ruffle sections together on the curved edge only. Clip curves. Turn RSO. Press.
12. With RST, match center of ruffle to center of apron bottom. Pin in place from the center to each side. If ruffle is a little long, trim ends to fit. Unpin side edges of ruffle and finish. Pin back in place. Stitch ruffle to bottom of apron. Press seam toward apron and topstitch in place.
13. Stitch side edges of apron facing to apron using a 5/8" seam allowance. Trim corner. Turn RSO. Press.
14. Turn side edges of apron and ruffle under 5/8". Press. Topstitch entire apron, ruffle and neck strap.
15. Pin two pocket sections RST. Stitch all the way around the four edges. Trim corners. Make a 3" slit through the lower edge of one section ONLY for turning. Turn pocket RSO through opening. Press. Use a piece of fusible web to fuse opening together.
16. Position pocket in place on front of apron. Topstitch in place.

**INDYGO JUNCTION**  
*Handmade Style for the Creative Spirit*

*Be the first to learn about our new products!*

Sign up for our e-newsletter, and view our full line of books and patterns by visiting our website:  
[www.indygojunctioninc.com](http://www.indygojunctioninc.com)



the **vintage workshop**  
*timeless images...creative inspirations*

*Learn about printable fabrics and digital artwork!*

Visit our website for:  
CD-ROMS • DOWNLOADS  
KITS & BOOKS • INKJET FABRICS  
[www.thevintageworkshop.com](http://www.thevintageworkshop.com)



No part of this product may be reproduced in any form, unless otherwise stated, in which case reproduction is limited to the use of the purchaser. The written instructions, photographs, designs, projects and patterns are intended for the personal use of the retail purchaser. **Written permission must be obtained from Indygo Junction, Inc. for other commercial uses of these designs, including craft sales and kitting rights.**

©2005 Indygo Junction, Inc.

P.O. Box 30238, Kansas City, MO 64112

E-mail: [info@indygojunctioninc.com](mailto:info@indygojunctioninc.com) • [www.indygojunctioninc.com](http://www.indygojunctioninc.com)

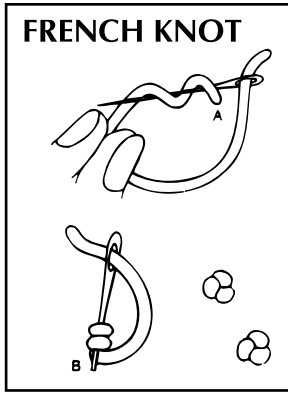


FIG. 1

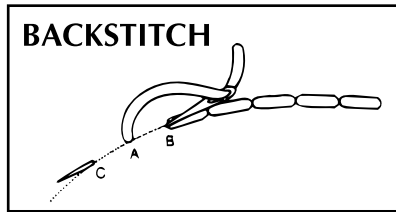


FIG. 2

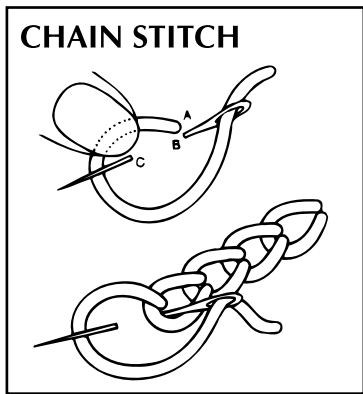
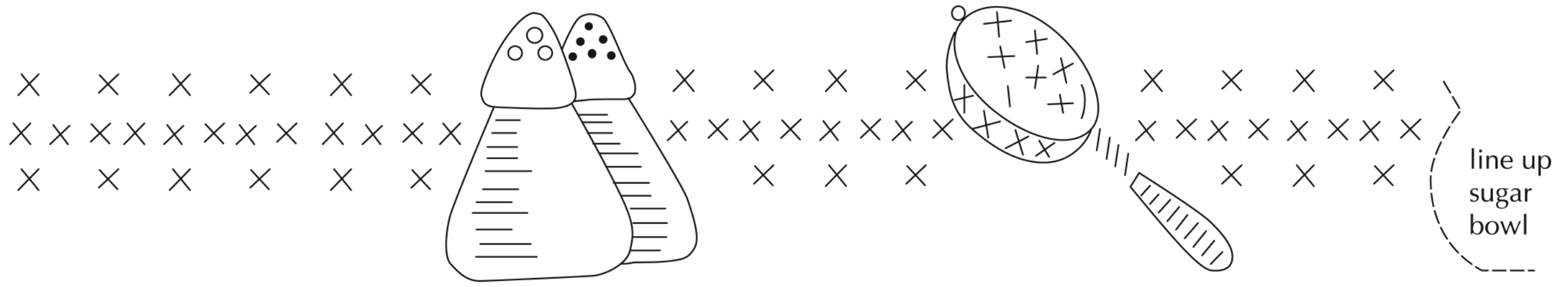
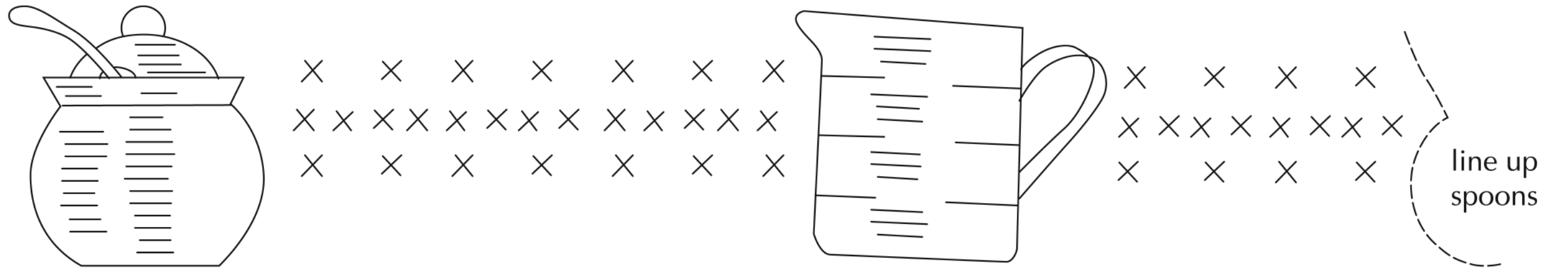


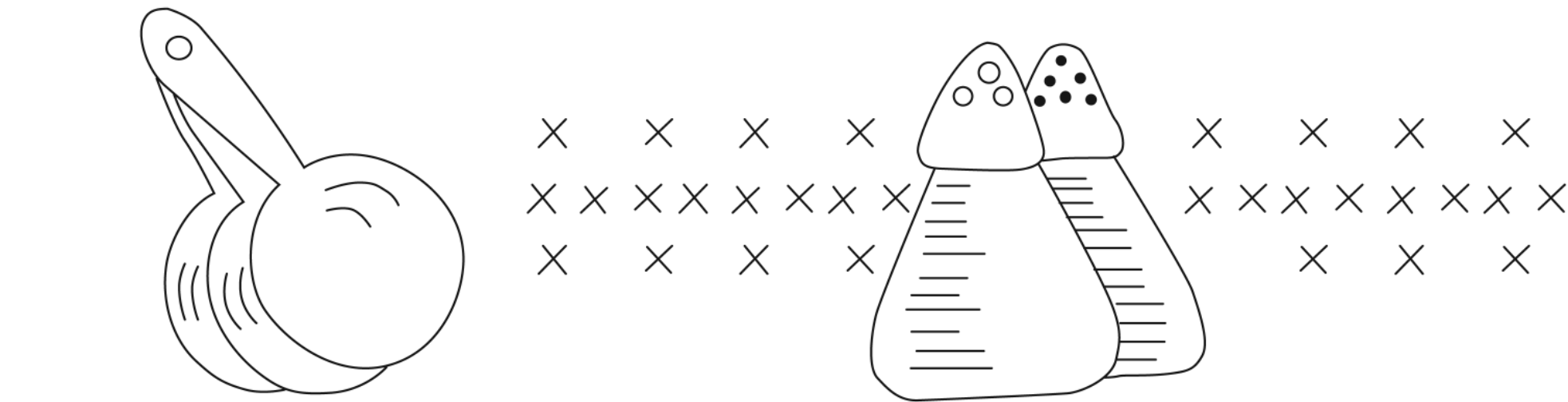
FIG. 3



LEFT



MIDDLE



RIGHT

# Correction Page

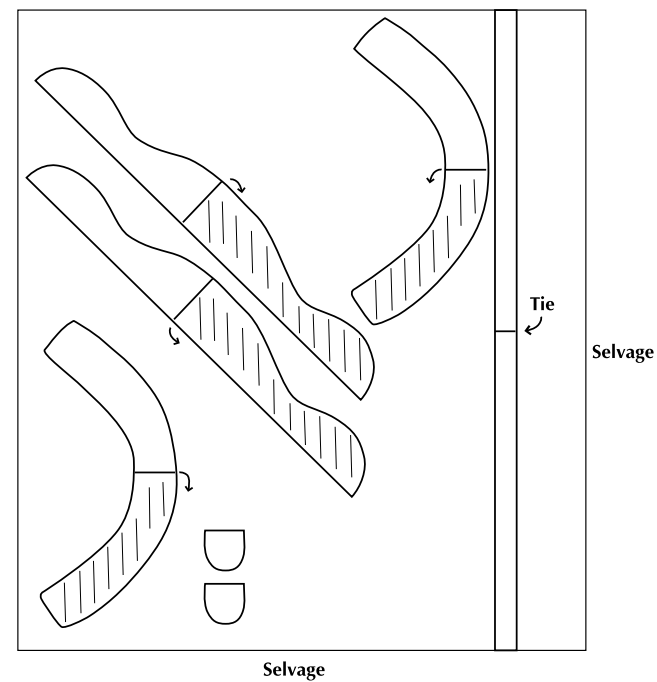
## COOK'S COVER UP

by Kathy Fernholz IJ733 ©2006 INDYGO JUNCTION, INC.

### REVISIONS/CHANGES TO APRON "A" ONLY:

Revised Materials Needed requirements, new pattern pieces cutting diagram, and revised cutting instructions.

1. For Apron A (red embroidered apron) you will need **1 yard of plaid fabric** (instead of a 1/2 yard).
2. **New pattern/cutting layout diagram below for Pattern Pieces #2, #3, and #4**, cut on the bias with 1 yard of fabric.



### 3. Change Assembly Instruction #1 to read:

Cut out the following pattern pieces from cream fabric:

Pattern Piece #1 – cut one on fold

Cut out the following pattern pieces from plaid fabric, per cutting diagram above:

Pattern Piece #2 – cut one on bias

Pattern Piece #3 – cut one on bias

Pattern Piece #4 – cut one on bias